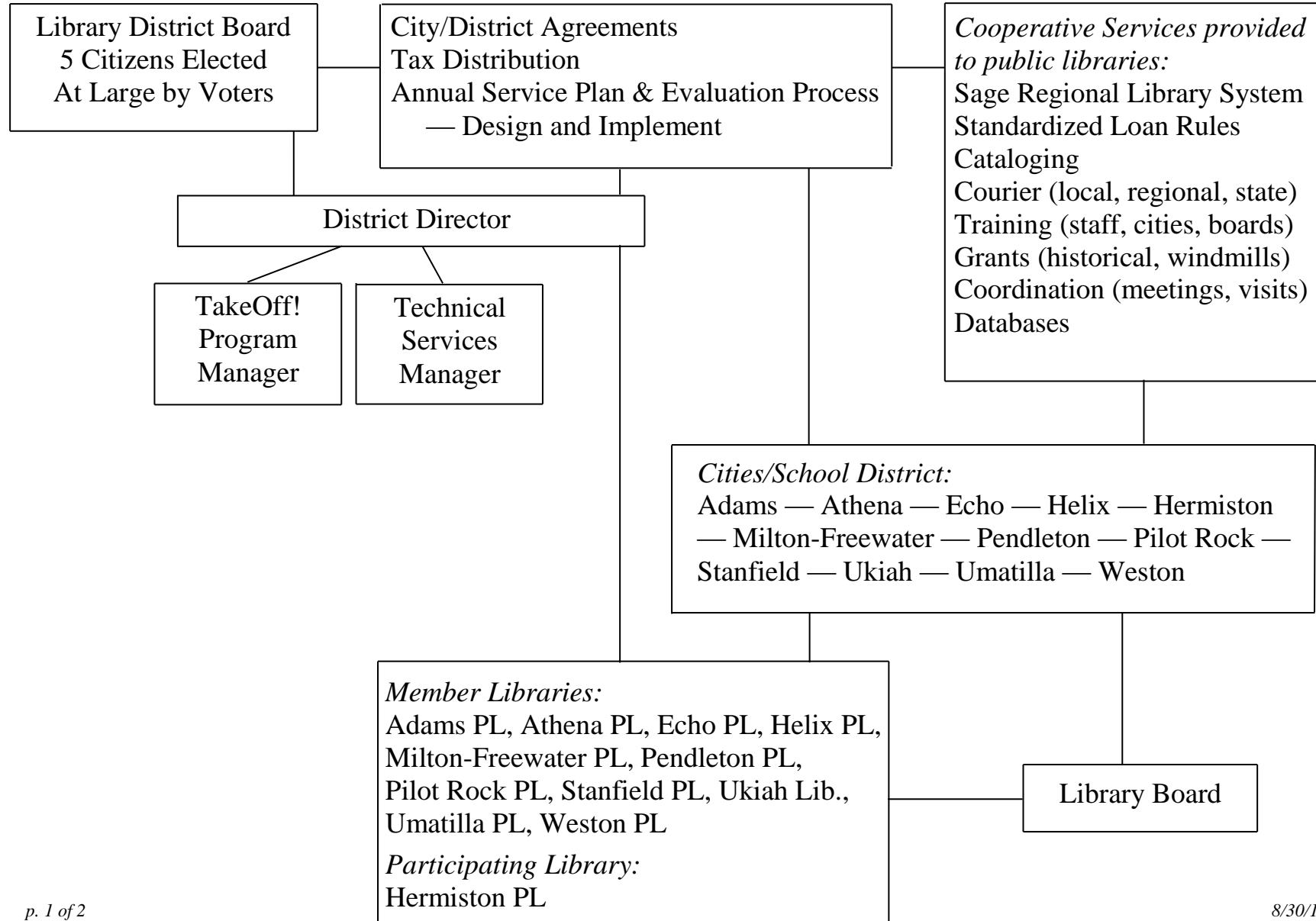


Umatilla County Special Library District (UCSLD) Governance Outline

The Umatilla County Special Library District (UCSLD) governance model is a hybrid of the traditional consolidated and federated library system governance models. It balances the benefits of a federated library system, namely, local control with the service efficiencies of a cooperative or consolidated library system.



Umatilla County Special Library District (UCSLD) Governance Outline

MAJOR ROLES AND RESPONSIBILITIES:

Library District Board

- Oversees distribution of approved tax-payer funds that strengthen community libraries in Umatilla County
- Oversees agreements with city libraries for public library services
- Sets District policies
- Develops and implements District strategic plans
- Hires District Director and staff

District Director

- Provides expertise, leadership and coordination
- Advises District Board regarding policy, resource allocation and strategic planning
- Prepares and manages District budget
- Administers District operations
- Monitors and evaluates District activities
- Supervises and evaluates District staff
- Serves as District Board Secretary

Cities

- Adopts local library policies
- Hires local library director
- Prepares/adopts annual local library budget
- Fiscally supports local library
- Supports and advocates for libraries and UCSLD

Library Boards

- Serves as library policy advisors to the city
- Supports and advocates for libraries and UCSLD
- Carries out duties as stated in Oregon State law/City ordinance regarding library boards
- Monitors compliance with Agreement for Library Service between City and District

Local Library Director

- Provides expertise, leadership and coordination
- Advises library board regarding policy, resource allocation and strategic planning
- Prepares and manages library budget
- Oversees local library operations
- Monitors and evaluates library performance
- Hires and supervises library staff
- Oversees coordination with local library support groups
- Oversees compliance with Agreement for Library Service between City and District